



PropertyLine



135A Harris Street

, Peterborough, PE1 2LZ

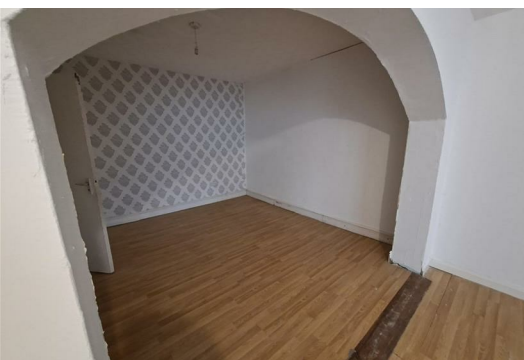
£1,050



Welcome to this spacious two-bedroom flat located on Harris Street in the vibrant city of Peterborough. Spanning an impressive 947 square feet, this property offers ample living space, making it an ideal choice for individuals or small families seeking comfort and convenience.

As you enter, you are greeted by a generous reception room that provides a perfect setting for relaxation or entertaining guests. The flat features two well-proportioned bedrooms, each offering a peaceful retreat at the end of the day. The newly fitted bathroom and kitchen add a modern touch, ensuring that you have all the contemporary amenities you need for a comfortable lifestyle.

One of the standout features of this property is its prime location. Situated close to a variety of shops, you will find everything you need just a short stroll away, from daily essentials to delightful local eateries. This accessibility enhances the appeal of the flat, making it not only a lovely home but also a practical choice for those who value convenience.



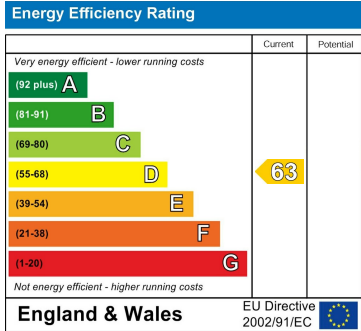
Area Map



Floor Plans



Energy Efficiency Graph



These particulars, whilst believed to be accurate are set out as a general outline only for guidance and do not constitute any part of an offer or contract. Intending purchasers should not rely on them as statements of representation of fact, but must satisfy themselves by inspection or otherwise as to their accuracy. No person in this firms employment has the authority to make or give any representation or warranty in respect of the property.